

Titanium Dental Technologies

Bone Regeneration
Products Catalogue

- Cytoplast TXT-200 PTFE Membranes
- Cytoplast RTM Collagen Membranes
- Cytoplast Ti-250 Titanium Reinforced Membranes
- Cytoplast PTFE Sutures
- Pro-fix Precision Fixation System
- Vitala



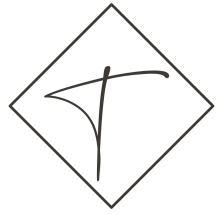
Contact



+27 11 425 9819



accounts@ti-tec.com



Cytoplast® TXT-200 & TXT-200 Singles

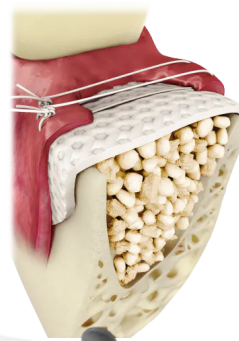


**MOST POPULAR
MEMBRANE FOR
SOCKET GRAFTING**

Micro - textured, high - density PTFE membrane

Features & Benefits

- Non-Resorbable
- 100% Dense (non-expanded) PTFE; pore size less than 0.3 μ
- Purposely leave the membrane exposed
- Soft tissue attaches , but doesn't grow through the membrane
- Hexagonal dimples increase surface area
- Won't resorb prematurely - you dictate healing time
- Impervious to bacteria
- Less surgical time, preservation of soft tissue architecture and keratinised mucosa
- Exposed membrane allows for non-surgical removal; no anaesthesia required
- Designed to increase membrane stabilisation



The patented Regentex™ surface helps stabilize the membrane and the soft tissue flap.
Hexagonal surface dimples provide a textured surface, which increases the area available for cellular attachment without increasing porosity.

**TXT -200 Singles
12mm x 24mm**



Part no. TXT1224-1
(1 membrane per box)
Part no. TXT1224
(10 membranes per box) I

**TXT-200
25mm x 30mm**



Part no. TXT2530-1
(1 membrane per box)
Part no. TXT2530
(4 membranes per box)



Praise for our product

"I always know, in advance, the results of my bone grafting when I use Cytoplast TXT-200 as a membrane. Why bother with other membranes."

~ Mark Cohen, DDS ; Periodontist

"I had given up on e-PTFE products because of post-operative complication. However, the Cytoplast® textured d-PTFE has eliminated those problems. I love it's handling, ease of insertion and removal."

~Jamison Scotto, DMD; Periodontist



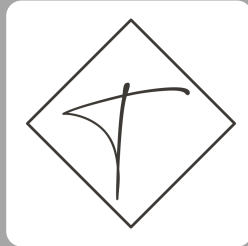
Contact us:



accounts@ti-tec.com



011 425 9819



*Cytoplast® Ti-250
Titanium Reinforced*

Titanium - Reinforced , high - density PTFE membrane

12mm x 24mm

No. Ti-250AN-1 (1 per box)

No. Ti-250AN-2 (2 per box)



Ti-250 Anterior Narrow

Ideal for narrow single-tooth extraction sites, especially where one or more bony walls are missing.

14mm x 24mm

No. Ti-250AS-1 (1 per box)

No. Ti-250AS-2 (2 per box)



Ti-250 Anterior Singles

Ideal size and shape for single-tooth extraction sites, especially where one or more bony walls are missing.

17mm x 25mm

No. Ti-250BL-1 (1 per box)

No. Ti-250BL-2 (2 per box)



Ti-250 Buccal

Designed for large buccal defects.

25mm x 30mm

No. Ti-250PL-1 (1 per box)

No. Ti-250PL-2 (2 per box)



Ti-250 Posterior Large

Designed for grafting large bony defects, including ridge augmentation.

30mm x 40mm

No. Ti-250XL-1 (1 per box)

No. Ti-250XL-2 (2 per box)



Ti-250 XL

Designed for very large bony defects, especially ridge augmentation.

20mm x 25mm

No. Ti-250PS-1 (1 per box)

No. Ti-250PS-2 (2 per box)



Ti-250 Posterior Singles

Designed for grafting posterior extraction sites and limited ridge augmentation.

Contact us:

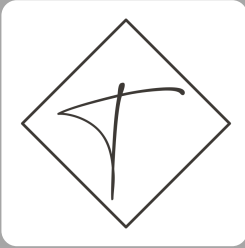


011 425 9819



accounts@ti-tec.com





Cytoplast® RTM Collagen

Type 1 bovine collagen membrane



15 mm x 20 mm

Part No. RTM 1520
(2 membranes per box)



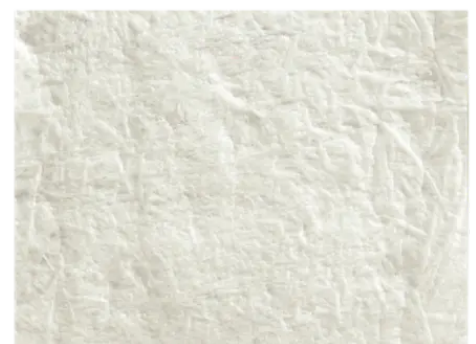
20 mm x 30 mm

Part No. RTM 2030
(2 membranes per box)



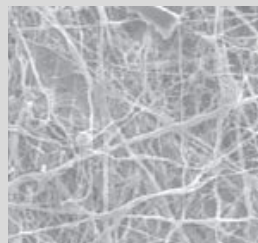
30 mm x 40 mm

Part No. RTM 3040
(2 membranes per box)



Features & Benefits

- Manufactured from highly purified type 1 bovine Achillestendon
- Longer, predictable resorption time **(26 - 38 weeks)**
- Unique fiber orientation provides high tensile strength
- Cell occlusive
- Optimized flexibility
- Safe for the patient
- Prevents epithelial down growth
- No risk of particle loss due to premature resorption
- You can suture or tack the membrane in place without tearing
- Stiff enough for easy placement, yet easily drapes over ridge



Multi-layer construction allows tissue integration into outer layer, while preventing direct passage of bacteria and epithelial cells.

Praise for our product

"Cytoplast ®RTM Collagen membrane is a superior product for many surgical procedures." ~ Jerald Rosenberg, DMD, Periodontist

"Cytoplast ® RTM Collagen has made my guided bone regeneration cases more successful due to it's handling properties and predictable resorption time." ~ Cory Wanatnick, DMD, Periodontist

Contact us:



accounts@ti-tec.com



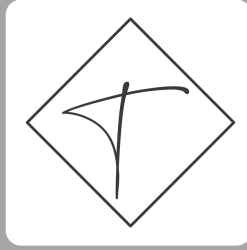
011 425 9819



Contact us:

 accounts@ti-tec.com

 011 425 9819



Cytoplast® PTFE Suture

The soft monofilament suture

Needle Description

19 mm 3/8 Circle
Precision Reverse Cutting



Needle Description

19 mm 3/8 Circle
Precision Reverse Cutting



Needle Description

16 mm 3/8 Circle
Precision Reverse Cutting



Needle Description

16 mm 3/8 Circle
Precision Reverse Cutting



Needle Description

13 mm 1/2 Circle
Round-Bodied



Needle Description

13 mm 3/8 Circle
Precision Reverse Cutting



12 Sutures per
box

Popular for procedures where a longer needle is desired.

CSO418

CSO51819

Combines most popular needle in dentistry with most popular suture size.

CSO518

Most popular size for dental implant and bone grafting procedures.

CSO618RC

For dental implant and bone grafting procedures.

CSO618PERIO

For soft tissue grafts and delicate tissues that requires an atraumatic needle.

CSO618PREM

50% longer cutting edges give needles a more slender, defined shape that greatly decreases the force applied to the needle during surgery.

Features & Benefits

- 100% Medical Grade PTFE
- Monofilament
- Soft (not stiff)
- Little to no package memory
- Non-resorbable
- Biologically inert
- Doesn't wick bacteria
- Comfortable for patients
- Excellent handling, knots secure
- Keeps the surgical site reliably closed

Pro-fix™

Precision fixation system



Contact us:



accounts@ti-tec.com



011 425 9819

Features & Benefits

- Self-drilling titanium alloy screws
- Cruciform Drive system
- Autoclavable storage tray with organiser dial
- Designed to aggressively engage bone, allowing for precise placement - even in cortical bone
- Provides for easy pickup and safe transport of screws to the surgical site
- Allows for maximum versatility, and can store up to 100 screws

Tenting Screw Kit



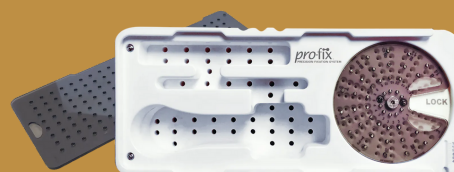
- (1) Autoclavable Tecapro storage tray w/screw organiser dial
- (1) Stainless steel driver handle
- (1) 76 mm cruciform driver blade
- (1) 56 mm cruciform driver blade
- (4) 1.5 mm x 3.0 mm self-drilling titanium alloy tenting screws
- (4) 1.5 mm x 4.0 mm self-drilling titanium alloy tenting screws
- (4) 1.5 mm x 5.0 mm self-drilling titanium alloy tenting screws

Membrane Fixation Kit

- (1) Autoclavable Tecapro storage tray w/screw organiser dial
- (1) Stainless steel driver handle
- (1) 76 mm cruciform driver blade
- (20) 1.5 mm x 3.0 mm self-drilling titanium alloy membrane fixation screws

Replacement Parts

Handle
Driver blade (76mm)
Driver blade (56mm)
Storage Tray



Fixation Screws



1.5 x 3.0 mm
self-drilling membrane
fixation screws

PFMF-5 5 screws
PFMF-10 10 screws
PFMF-20 20 screws

Tenting Screws

1.5 mm x 3.0 mm
self-drilling tenting screw

3.0 mm polished neck + 4.0 mm
threaded portion = 7 mm total length

PFT3 - 1 screw
PFT3-5 - 5 screws

1.5 mm x 4.0 mm self-drilling
tenting screw

4.0 mm polished neck + 4.0 mm
threaded portion = 8 mm total length

PFT4 - 1 screw
PFT4-5 - 5 screws



1.5 mm x 5.0 mm self-drilling tenting screw

5.0 mm polished neck + 4.0 mm threaded portion
= 9 mm total length

PFT5 - 1 screw
PFT5-5 - 5 screws

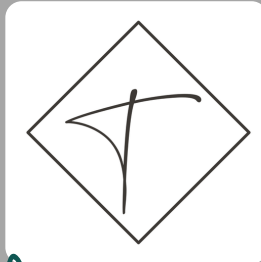
1.5 mm x 10.0 mm self-drilling tenting screw

PFT10 - 1 screw

Contact us:

 accounts@ti-tec.com

 011 425 9819



Vitala®

A natural porcine-derived
collagen membrane



Features & Benefits

• Natural

Vitala is manufactured using a proprietary decellularization protocol designed to maintain the natural, microporous, 3-layered architecture of the tissue. It is biologically cross-linked, eliminating the need for cross-linking chemicals and agents.

• Adaptable

The natural collagen structure provides a unique combination of supple handling and ideal defect adaptability. Because both sides are smooth, either side may be placed against the defect.

• Durable

Designed to resist tearing during placement, Vitala is naturally stronger than other porcine collagen membranes.

Vitala is a natural porcine-derived collagen membrane. Vitala features the advanced handling characteristics of a soft, supple, exceptionally flexible and adaptive membrane with superior tensile strength.



15 x 20 mm

Part No. Vit1520

13 x 25 mm

Part No. Vit1325

20 x 30 mm

Part No. Vit2030

30 x 40 mm

Part No. Vit3040

