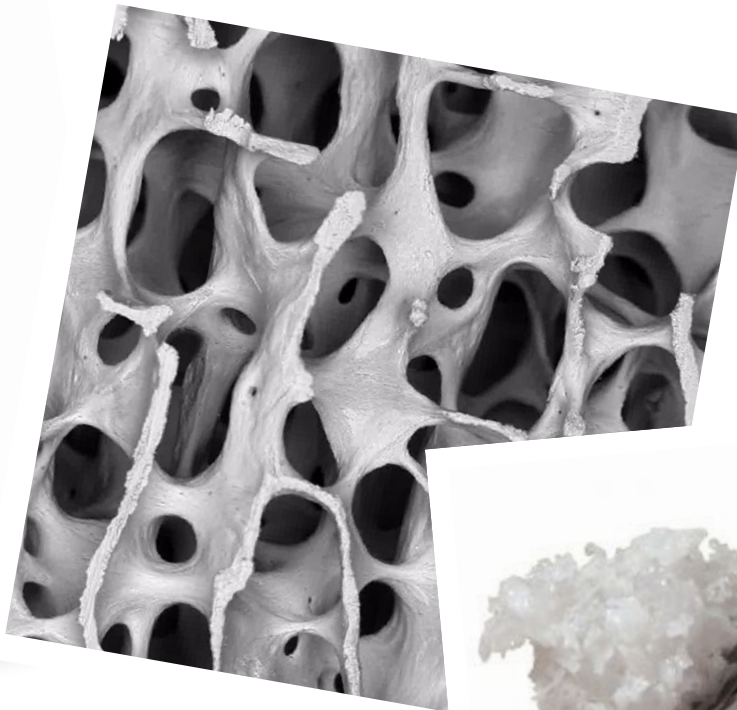


Titanium Dental Technologies
YOU ARE OUR PRIORITY

Bone Grafting & Regenerative Products



- RCM6 Resorbable Collagen Membrane
- conFORM Resorbable Collagen Membrane
- NuOss collagen
- NuOss Cancellous Granules
- Resorbable Collagen Plug
- Resorbable Collagen Foam
- Resorbable Collagen Tape
- Natural Bone Substitutes
- NuOss XC socket
- NuOss XC sinus
- Trufix Complete Fixation System

ACE
SURGICAL SUPPLY CO., INC.

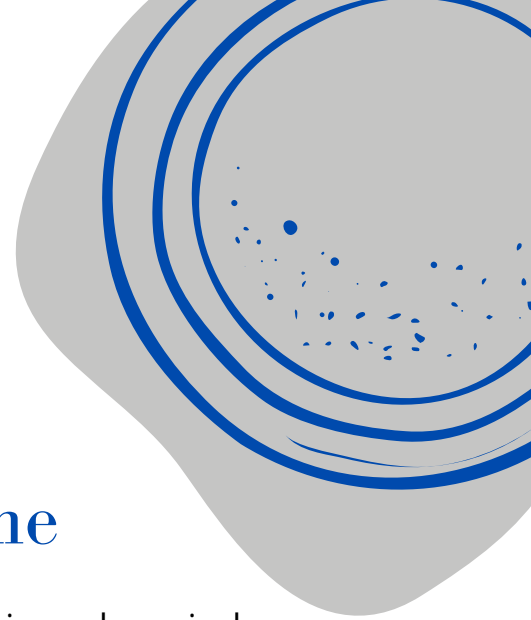
Contact us



011 425 9819



accounts@ti-tec.com



Resorbable Collagen Membrane

RESORBABLE COLLAGEN MEMBRANE is intended for use in oral surgical procedures as a resorbable material for placement to aid in wound healing in the areas of dental implants, bone defects, periodontal defects and ridge augmentation.

ACE RCM_{6TM} With its defined geometry, in vivo stability, permeability and mechanical strength, is a white, nonfriable membrane matrix engineered from highly purified Type 1 Collagen. ACE RCM is packaged sterile, non-pyrogenic, and is for single use. It's resorbability eliminates the need for a second surgery.

FEATURES

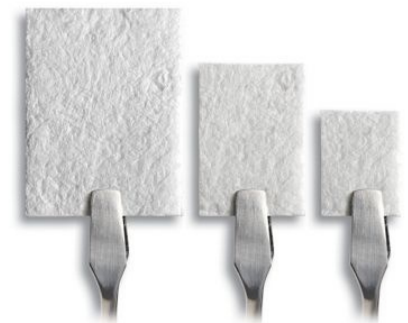
- Guides healing of bone and surrounding tissue
- Unique fibre orientation to provide high tensile strength for in situ stability of membrane
- Cell occlusive, designed to retard and/or prevent epithelium down growth

TYPICAL USES

- Ridge Augmentation
- Bone Regeneration around Implants
- Sinus Window
- Extraction Sites
- Periodontal Defects

ADVANTAGES

- Longer resorption time, for sustained function in bone repair
- Higher mechanical strength for membrane stabilisation
- Each piece can be easily trimmed during surgery for a final fit
- May be placed with either side against the tissue or bone



Titanium Dental Technologies
YOU ARE OUR PRIORITY

Contact us

011 425 9819

accounts@ti-tec.com

RCM RESORBABLE COLLAGEN MEMBRANE

Description	Membrane size	Thickness
RCM Membrane	15 x 20 mm	.3mm
RCM Membrane	20 x 30 mm	.3mm
RCM Membrane	30 x 40 mm	.3mm



Resorbable Collagen Membrane

RESORBABLE COLLAGEN MEMBRANE is intended for use in oral surgical procedures as a resorbable material for placement to aid in wound healing in the areas of dental implants, bone defects, periodontal defects and ridge augmentation.



ACE conFORM, with its defined geometry, in vivo stability, permeability and mechanical strength, is a white, nonfriable membrane matrix engineered from highly purified Type 1 Collagen. **ACE conFORM** is packaged sterile, non-pyrogenic and is for single use. It's resorbability eliminates the need for a second surgery..

ADVANTAGES

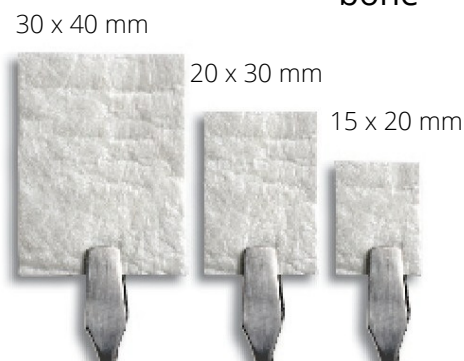
- Does not adhere to itself
- Zero memory
- Sufficient resorption time for sustained function in bone repair
- Higher mechanical strength for membrane stabilisation
- Can easily be trimmed during surgery for a final fit
- May be placed with either side against the tissue or bone

FEATURES

- Fully resorbable
- Easy to handle
- Guides healing of bone and surrounding tissue
- Unique fiber orientation to provide high tensile strength for in situ stability of membrane
- Predictable resorption time (3-4 months)**
- Cell occlusive, designed to retard and/or prevent epithelium down growth.

TYPICAL USES

- Ridge Augmentation
- Bone Regeneration Around implants
- Sinus Lift
- Periodontal Defects
- Apical Root Resection
- Extraction Sites



Contact us



011 425 9819



accounts@ti-tec.com

conFORM RESORBABLE COLLAGEN MEMBRANE

Description	Membrane size	Thickness	Code
conFORM Membrane	15 x 20 mm	.3mm	5091520
conFORM Membrane	20 x 30 mm	.3mm	5092030
conFORM Membrane	30 x 40 mm	.3mm	5093040

Deproteinized Bovine Bone



NuOss™ - A natural porous bone mineral matrix produced by the removal of all organic components from bovine bone. Due to its natural structure, **NuOss** is physically and chemically comparable to the mineralised matrix of human bone.

NuOss™ Collagen - A natural bone substitute that promotes bone growth in both periodontal and maxillofacial defects. **NuOss** Collagen is made up of cancellous granules mixed with approximately 5% of bovine collagen. Once moistened the **NuOss** Collagen is moldable and can be placed in most defects.

TYPICAL USES:

- Ridge Augmentation
- Filling of infrabony periodontal defects
- Filling of extraction sockets
- Elevating the maxillary sinus floor
- Filling of peri-implant defects

NuOss Cancellous Granules

Description	Particle size	Vial Volume
NuOss Cancellous Granules	.25-1.0mm	.25gram / .5cc
NuOss Cancellous Granules	.25-1.0mm	.5gram / 1.1cc
NuOss Cancellous Granules	.25-1.0mm	1.0 gram / 2.15cc
NuOss Cancellous Granules	.25-1.0mm	2.0gram / 4.2cc

NuOss Large Particle Cancellous Granules

Description	Particle size	Vial Volume
NuOss Cancellous Granules	1.0-2.0mm	.5gram / 1.8cc
NuOss Cancellous Granules	1.0-2.0mm	2.0gram / 7.2cc

NuOss Collagen

100mg, approx. 6mm x 7mm x 8mm

250mg, approx. 8mm x 9mm x 9mm

500mg, approx. 10mm x 11mm x 12mm



Contact us



011 425 9819



accounts@ti-tec.com



Titanium Dental Technologies
YOU ARE OUR PRIORITY



RCP RESORBABLE COLLAGEN PLUG

BENEFITS:

- Fully absorbable
- Ideal for applications in minor oral wounds
- Ideal for extraction sockets
- Controls bleeding due to the intrinsic hemostatic properties of collagen fibre
- Similar to Colla Plug

1 cm x 2 cm, Sterile 10/box 5094000

RCF RESORBABLE COLLAGEN FOAM

BENEFITS:

- Provides an excellent matrix to assist in wound healing
- Fully absorbable
- Establishes a matrix for tissue ingrowth
- Protects the oral wound bed
- Similar to characteristics of Colla Cote

2 cm x 4 cm, 3mm thick, Sterile,
10/box 5092000



RCT RESORBABLE COLLAGEN TAPE

BENEFITS:

- Ideal for applications in minor oral wounds
- Aids in the repair of the Schneiderian Membrane
- Controls bleeding due to the hemostatic properties of collagen fibre
- Protects the oral wound bed
- Similar to characteristics of Colla Tape

2.5 cm x 7.5 cm, 1mm thick, Sterile 10/box
1091896



Contact us



011 425 9819



accounts@ti-tec.com



Natural Bone Substitutes

NuOss XC is the latest development in natural bone substitutes

- Supports bone growth in periodontal and oral maxillofacial defects
- Is a composite grafting material comprised of mineralised de-proteinated bovine granules and purified type I bovine collagen. When placed into a bleeding site, the material expands to a predetermined size and shape
- Is available in both socket and sinus forms
- Is easy to place, prevents particle migration and saves time



NuOssXC Socket
(Socket Syringe)

Intended Use:

Filling of extraction sockets to enhance preservation of the alveolar ridge

509-2001 NuOss XC Socket

6 x 15mm

509-2002 NuOss XC Socket

9 x 15mm

Dimensions: expanded state

Features and benefits:

- Expanding composite material allows for placement in a compressed form with self-expansion to fill the entire defect upon hydration
- Simple implantation technique
- Composite nature of the material enhances graft stability and minimises particulate migration
- Optimizes spacing between particulate to allow for bone ingrowth

Expansion time: Immediately upon contact with blood source or by hydration with sterile saline after implantation



NuOssXC Sinus
(Sinus Plug)

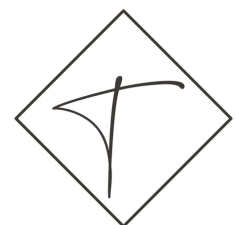
Intended Use:

Elevation of maxillary sinus floor

509-3001 NuOss XC Sinus, 17 x 10mm

509-3002 NuOss XC Sinus, 22 x 12mm

Dimensions: expanded state



Placing NuOss XC Sinus:

Upon successful elevation of the Sinus membrane, **NuOss XC Sinus** is placed without pre-hydration, into the sinus cavity. Expansion occurs via contact with blood or by hydration with sterile saline after implantation, allowing the material to fill the entire defect.

Contact us



011 425 9819



accounts@ti-tec.com

truFIX COMPLETE FIXATION SYSTEM

The truFIX System from ACE Surgical Supply provides you with everything you need for both bone fixation and membrane stabilisation. This system incorporates all the necessary components to pick-up and drive the newly designed ACE truSCREW and truTACK. The truFIX system eliminates the need for multiple systems and unnecessary components, making it user-friendly for your practice.

The newly designed truSCREW with its aggressive cutting flutes, is the ideal bone screw for the fixation of small bone within the oral and maxillofacial environment. These cutting flutes (in most instances) eliminate the need for any pre-drilling. The patented design of the screw ensures an effortless insertion into all types of bone.

The truTACK makes stabilisation of membranes quick and trouble-free. Our unique tack incorporates a hexagon on its head and threads on its shaft, allowing for easy removal. The truTACK is placed like a tack and removed like a screw, a feature that you will not find in any other system.

- You choose the Screws and Tacks
- truSCREW developed for easy insertion with maximum fixation
- True cantered patented locking connection
- True axial alignment with pick-up each time
- True self-drilling screw
- Patented removal sleeve for disengaging the screw from the driver

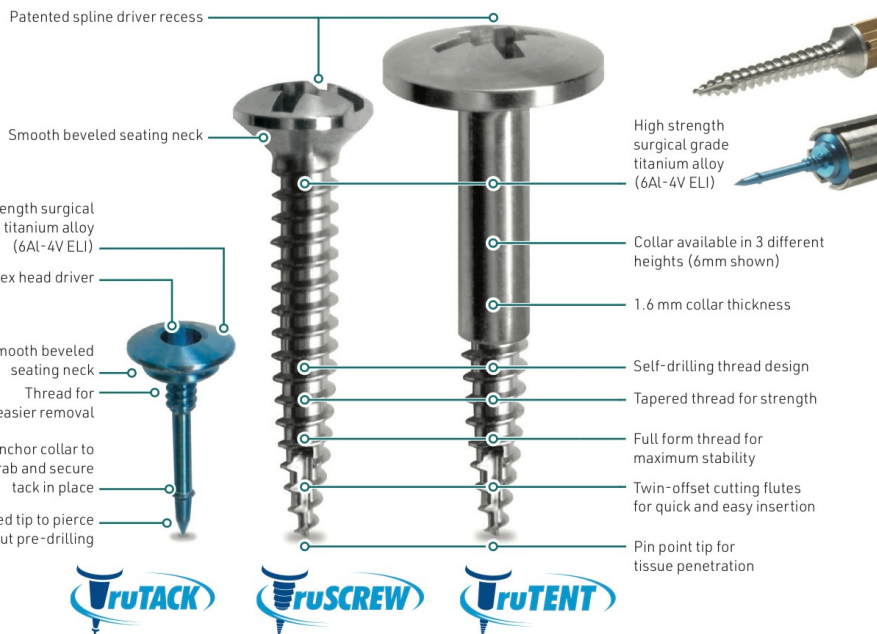
Contact us



011 425 9819



accounts@ti-tec.com



			Head Diameter	Thread Diameter	Thread Length
truSCREW™ 1.2 Thread Diameter					
454-27202	truSCREW	3HD	1.2TD	x 4.5TL	
454-27203	truSCREW	3HD	1.2TD	x 6.0TL	
454-27204	truSCREW	3HD	1.2TD	x 7.5TL	
454-27205	truSCREW	3HD	1.2TD	x 9.0TL	
454-27206	truSCREW	3HD	1.2TD	x 10.5TL	

truSCREW™ 1.5 Thread Diameter					
454-27502	truSCREW	3HD	1.5TD	x 6.0TL	
454-27503	truSCREW	3HD	1.5TD	x 7.5TL	
454-27504	truSCREW	3HD	1.5TD	x 9.0TL	
454-27505	truSCREW	3HD	1.5TD	x 10.5TL	
454-27506	truSCREW	3HD	1.5TD	x 12.0TL	
454-27507	truSCREW	3HD	1.5TD	x 13.5TL	
454-27508	truSCREW	3HD	1.5TD	x 15.0TL	

			Head Diameter	Thread Diameter	Thread Length
truSCREW™ 2.0 Thread Diameter					
454-28002	truSCREW	3HD	2.0TD	x 6.0TL	
454-28003	truSCREW	3HD	2.0TD	x 7.5TL	
454-28004	truSCREW	3HD	2.0TD	x 9.0TL	
454-28005	truSCREW	3HD	2.0TD	x 10.5TL	
454-28006	truSCREW	3HD	2.0TD	x 12.0TL	
454-28007	truSCREW	3HD	2.0TD	x 13.5TL	
454-28008	truSCREW	3HD	2.0TD	x 15.0TL	

			Head Diameter	Thread Diameter	Thread Length
TENTING SCREW 1.5 Thread Diameter					
454-25501	Tenting Screw	4HD	1.5TD	x 7.0TL	
454-25502	Tenting Screw	4HD	1.5TD	x 11.0TL	
454-25503	Tenting Screw	4HD	1.5TD	x 15.0TL	
truTACK™					
96-003-13	truTACK	2.5HD	-	3.0TL	
96-003-14	truTACK	2.5HD	-	5.0TL	

454-18015 truFIX Complete Fixation System includes:

- 454-19001 truFIX Driver Handle
- 454-17001 truTACK Driver Tip
- 454-15201 truSCREW Driver Tip, Contra-Angle
- 454-15001 truSCREW Driver Tip
- 454-17901 truSCREW Driver Removal Sleeve
- 50-27-00045 Pilot Bur, 0.45mm, 27 mm Length, Contra angle
- 454-40201 1.1mm Pilot Twist Drill
- 454-281001 CA Step Drill (Lag Screw), 8mm and 1.6mm Steps, Contra Angle
- 454-50201 truSCREW Packaging Removal Tool
- 20-1577-02 0.88mm External Hex Hand Driver
- 454-18501 truFIX Tray

NEEDLES & SUTURES



Titanium Dental Technologies
YOU ARE OUR PRIORITY

REVERSE CUTTING NEEDLES

3/8 Circle

DS18 (FS-2)

DS24 (FS-1)

DSM13 (P3)

DSM18 (PS2)

DS12 (C-2)

DSM18 (PS2)

1/2 Circle

HS24 (X-1)

HS16 (X-8)



TAPER POINT NEEDLES

1/2 Circle

HR17 (RB-1)

T4 (SH-1)

T28 (RB-1)

HR26 (SH)

HRT17 (V5)



ACE PLAIN GUT SUTURES

Comparable Ethicon Comparable Look

Item #	Size	Description	Needle	Needle	In.	Qty.	Needle
003-2504	3-0	Plain Gut	DS18	FS2	27	12	C6

ACE CHROMIC GUT SUTURES

Comparable Ethicon Comparable Look

Item #	Size	Description	Needle	Suture	Needle	In.	Qty.	Suture	Needle
003-2484	3-0	Chromic Gut	DS18	636G	FS2	18	12		
003-2485	4-0	Chromic Gut	DS18		FS2	18	12	558B	C6
003-2482	4-0	Chromic Gut	DS18	635G	FS2	27	12		C6
003-2502	5-0	Chromic Gut	DSM13			18	12	1248B	C3

Contact us



011 425 9819

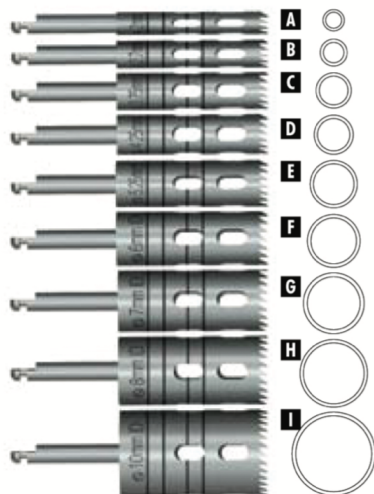


accounts@ti-tec.com

TREPHINE BURS

TREPHINE BURS - Contra-Angle

- For harvesting bone in autogenous bone graft placement
- May be used for retrieval of implants
- Laser marked score lines
- Manufactured from Titanium Alloy (Ti-6Al-4V ELI)
- Internally irrigated to minimise the risk of overheating the bone during drilling
- Can be used with the Drill Guide Paralleling System to eliminate drill chatter during graft or implant harvesting



Item Number	Shank Style	Head Material	I.D.	O.D.	Total Length	Cutting Length	Markings
A 04-9480-01	CA	Ti	2mm	2.8mm	35mm	18.5mm	8,10,13,15,18mm
B 04-9480-02	CA	Ti	2.7mm	3.5mm	35mm	18.5mm	8,10,13,15,18mm
C 04-9482-01	CA	Ti	3.75mm	4.6mm	35mm	18.5mm	8,10,13,15,18mm
D 04-9482-02	CA	Ti	4.25mm	5.10mm	35mm	18.5mm	8,10,13,15,18mm
E 04-9484-01	CA	Ti	5.25mm	6.10mm	32mm	15.5mm	8,10,13,15mm
F 04-9485-01	CA	Ti	6mm	6.9mm	32mm	15.7mm	8,10,13,15mm
G 04-9485-02	CA	Ti	7mm	7.9mm	32mm	15.8mm	8,10,13,15mm
H 04-9487-01	CA	Ti	8mm	8.9mm	32mm	14mm	8,10,13mm
I 04-9487-02	CA	Ti	10mm	10.8mm	32mm	14mm	8,10,13mm

DR.SMILER'S TREPHINE BURS - Posterior

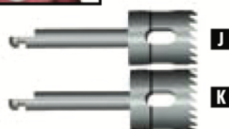
- For harvesting autogenous bone in the posterior maxillary region
- Laser marked score line to depth
- Manufactured from Titanium Alloy (Ti-6Al-4V ELI)

Item Number	Shank Style	Head Material	I.D.	O.D.	Total Length	Cutting Length	Markings
J 04-9486-01	CA	Ti	6mm	6.9mm	23mm	6.75mm	6mm
K 04-9486-02	CA	Ti	7mm	7.9mm	23mm	6.75mm	6mm

LATCH TO SQUARE DRIVER CONVERTER

- Secures and locks contra shaft for hand or ratchet drive

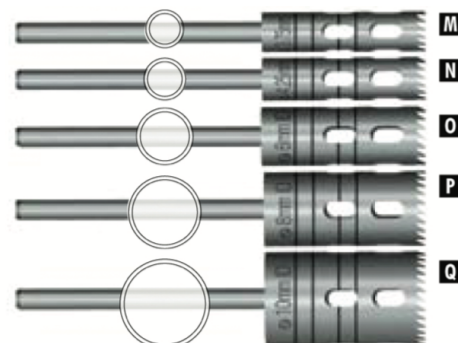
L 20-1554-11 14mm long



TREPHINE BURS - HANDPIECE

- For harvesting bone in autogenous bone graft placement
- Laser marked score lines
- Burs may be notched for the Stryker 100K Impaction Drill - Flat or Stepped - or J-Notched for an additional charge
- Stryker notched burs May be used in straight Hall type handpieces
- Manufactured from Titanium Alloy (Ti-6Al-4V ELI)

Item Number	Shank Style	Head Material	I.D.	O.D.	Total Length	Cutting Length	Markings
M 04-9492-01	HP	Ti	3.75mm	4.6mm	52mm	18.5mm	8,10,13,15,18mm
N 04-9492-02	HP	Ti	4.25mm	5.1mm	52mm	18.5mm	8,10,13,15,18mm
O 04-9495-01	HP	Ti	6mm	6.9mm	49mm	15.7mm	8,10,13,15mm
P 04-9497-01	HP	Ti	8mm	8.9mm	49mm	14mm	8,10,13mm
Q 04-9497-02	HP	Ti	10mm	10.9mm	49mm	14mm	8,10,13mm



Contact us



011 425 9819



accounts@ti-tec.com

TREPHINES USED TO RETRIEVE FAILED IMPLANTS

For Implants up to....

3.3mmuse **04-9482-01**

3.5–4.0mmuse **04-9482-02**

4.5–5.0mmuse **04-9484-01**

5.0–6.0mmuse **04-9485-01**